

ERSKINE[®]

ATTACHMENTS LLC

www.erskineattachments.com

800.437.6912

UTILITY HYDRAULIC SNOWBLOWER

SKID STEER ATTACHMENT



THE NORDIC SPIRIT OF INNOVATION...

*The First, Is Still The Best &
One of The World's #1 Selling
Snowblowers*



OUR STORY...

We are proudly celebrating our 70th year as a pioneer in designing and manufacturing snow blowing equipment and as a premier manufacturer of attachments for skid steers, mini skid steers, ATV/UTVs, wheel loaders and tractors.

Our manufacturing facility is the original manufacturer of the rear pull and front mounted snowblowers for tractors and the hydraulic snowblower for hydraulic powered power units. We are known in the industry for setting the standards and benchmarks for quality and performance, especially for snow removal equipment.

In 1948, our manufacturing facility was founded to meet the needs of local farmers located in northwestern Minnesota who were snowbound to their farms because of the amount of snowfall, blowing and drifted snow. The farmers milked cows and the bulk trucks couldn't reach their farm sites.

Northwestern Minnesota is heavily populated with the independent Scandinavian spirit. That spirit of self-determination clearly saw the problem and then birthed the solution. The region's farmers came together and designed the first snowblowers for tractors.

That same spirit of self-determination exists today at our manufacturing facility. We see problems as opportunities and we offer solutions to solve those problems that benefit our customers and society. So, when our dealers told us that they needed a Utility Hydraulic Snowblower for the home owner or hobby farmer we knew we could deliver. We are proud to introduce our newly redesigned Utility Hydraulic Snowblowers.

The Utility Hydraulic Snowblower is available for Skid Steers and Euro/Global Mount Tractors. Call now!

800.437.6912

ERSKINE[®]

ATTACHMENTS LLC

ERSKINE[®]

ATTACHMENTS LLC

www.erskineattachments.com

800.437.6912

UTILITY HYDRAULIC SNOWBLOWER

SKID STEER ATTACHMENT

NEW DESIGN FOR 2018

DEFLECTOR
CYLINDER

NO-FREEZE-UP CHUTE
design seals out snow
and freezing slush

FOUR-BLADED
FAN DESIGN

Optional:
Urethane (left) or
Hardened (right)
Skid Shoes



Optional:
Rubber or Urethane
Protective Cutting Edges.



Optional urethane skid shoes
(left) and cutting edge (right)

SERRATED edges

NO CHAINS, SPROCKETS
OR PTO SHAFTS
direct-drive hydraulic auger
eliminates problematic
chain drive

GREASABLE bearings

Standard HIGH-CARBON
steel cutting edge



Optional:
Wire Harness for hydraulic
models with attachment
controls. Fits Cat/ASV (8-pin)
and John Deere/New Holland/
CASE/Bobcat (14-pin).



Optional:
Pistol Grip Control Harness is
required if skid steer is NOT
equipped with attachment
control system.

SAFETY STEPS

ADJUSTABLE HEIGHT
Mounting Plate design

EASY MOTOR
ACCESS

STEEL
TUBE LINES

HEAVY-DUTY
SKID SHOES

GREASABLE
rollers

DEFLECTOR
CYLINDER

SPIN-FORMED
fan housing

STEEL
TUBE LINES



800.437.6912

ERSKINE[®]
ATTACHMENTS LLC



www.erskineattachments.com
800.437.6912

UTILITY HYDRAULIC SNOWBLOWER

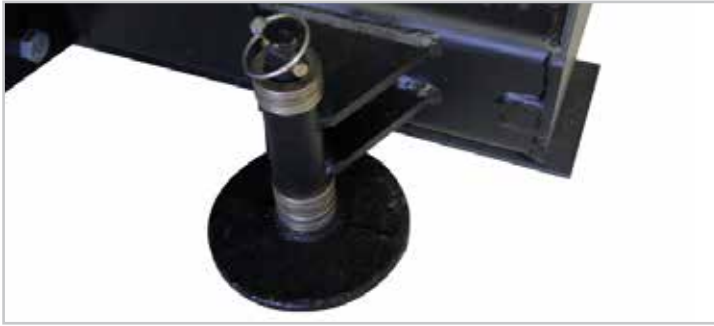
SKID STEER ATTACHMENT

Model	2020LT - 73"	2020LT - 79"	2020LT - 85"
Part Number	901449	901451	901453
Stage	2	2	2
Width of Cut	73"	79"	85"
Cutting Height	29"	29"	29"
Cutting Edge	5/8" x 6" bolt-on	5/8" x 6" bolt-on	5/8" x 6" bolt-on
Auger Diameter	16" open flight	16" open flight	16" open flight
Fan Diameter	20" 4-blade	20" 4-blade	20" 4-blade
Chute Rotation	Hydraulic 270°	Hydraulic 270°	Hydraulic 270°
Pressure Relief	Auger	Auger	Auger
Casting Distance	Up to 30'	Up to 30'	Up to 30'
Shipping Weight	831 lb.	859 lb.	886 lb.
Mounting Plate	Universal	Universal	Universal
Hoses	Included	Included	Included
Hydraulic Flow	11-25 GPM	11-25 GPM	11-25 GPM
Operating Pressure	2500-3500 psi	2500-3500 psi	2500-3500 psi
Standard Skid Shoes	Included	Included	Included

Options			
Serrated Auger	Optional	Optional	Optional
Hardened Skid Shoes	Optional	Optional	Optional
Urethane Skid Shoes	Optional	Optional	Optional
Urethane Cutting Edge	Optional	Optional	Optional
Rubber Cutting Edge	Optional	Optional	Optional
Pistol Grip Control	Optional	Optional	Optional
Loader Specific Wire Harness	Optional	Optional	Optional
Factory Installed Couplers	Optional	Optional	Optional

800.437.6912





Heavy-Duty Skid Shoes

Our adjustable skid shoes allow the operator to make quick and easy height adjustments.



Heavy-Duty Serrated Side Plates

Our unique heavy-duty serrated side plate design made of 7 gauge steel on the 2020 and 1/4" on the 2420/XL. The snowblower with the serrated side plates is able to cut into hard-packed drifted snow or hard-packed piles of snow. This allows the auger to grind away at the pile loosening snow to feed to the fan.



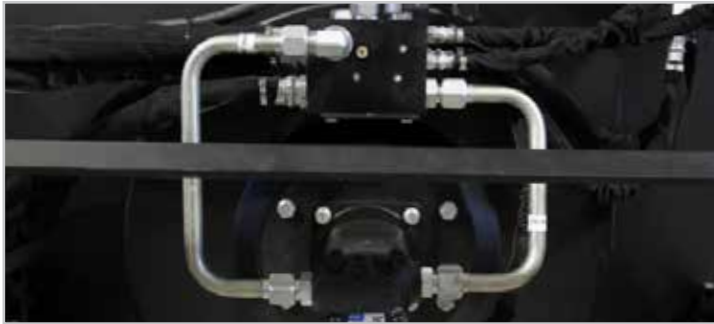
16" Serrated Auger on the 2020 Series, or 18" Optional

Our unique high capacity fan and motor system requires a large 16" or 18" auger design that can handle more snow material. Our serrated auger design cuts through hard-packed snow and ice. This flighting completely covers the middle of the auger so there isn't a "dead spot".



Standard Single Ribboned Auger

Standard auger flighting on the 2020 and 2420 series, is extra thick to increase lifespan in abrasive environments. Narrower flighting pitch makes the structure stiffer to withstand impacts better and move more snow to the center where the fan is located allowing our snowblower to blow more snow than our competitors.



Steel Tube Fittings

Steel tubelines are used to increase efficiency by making the oil path shorter, with smooth flowing corners. They are also more puncture resistant than hoses.



800.437.6912

ERSKINE
ATTACHMENTS LLC



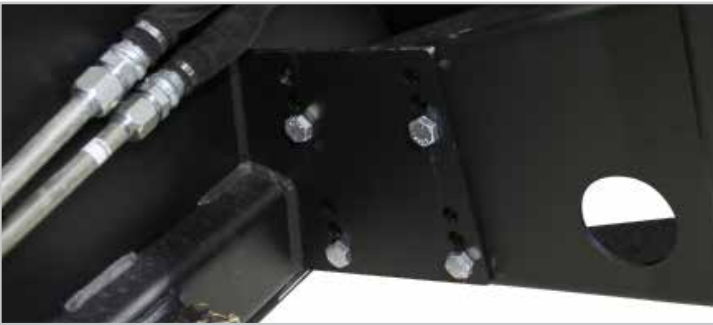
Our Unique Cutting Edge Design

The angled cutting edge is tipped down at 10 degrees to allow it to scrape ice and packed snow more easily. The blower body can still be rolled back for a less aggressive cut.



Three Greasable Rollers

The curved surface of the rollers reduces friction and prevents ice buildup from stopping the chute. Hydraulic chute rotation and deflection is standard equipment*. Our design eliminates metal-to-metal contact between the blower and the rotating chute base, preventing freeze-up under any conditions.



Ajustable Mounting Plate

Our unique adjustable height mounting plate design offers the customer 3 positions to match the mounting plate height of a variety of skid steers to create the proper adjustment for their power unit.



Highly Engineered Spun-Formed Fan Housing

Spun-formed fan housing is held to tighter tolerances than hand formed wrappers. This allows a tighter fit with the fan which increases system efficiency. With this increased efficiency our snowblower constantly outperforms our competitors making our snowblower year and year out the top performing snowblower in it's class.



Two Safety Steps

Two conveniently located steps provide a safe and easy entry and exit from the cab of your loader. Open mounting plate design allows for easy access.

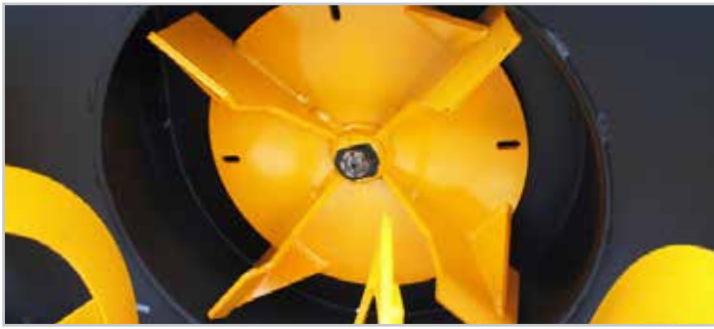


Greasable Bearing

The Heavy-duty greasable bearing supports the right side of the auger. It is easily accessed for maintenance.

800.437.6912

ERSKINE
ATTACHMENTS LLC



4-Bladed Fan Design

Our unique 20" 4-bladed fan design is precisely designed and robotic welded. Our unique four-bladed cupped fan is more efficient and throws a smoother and larger stream of snow than our competitors.



Greaseable Auger.

Our unique auger drive shaft is greaseable to prevent off season corrosion.

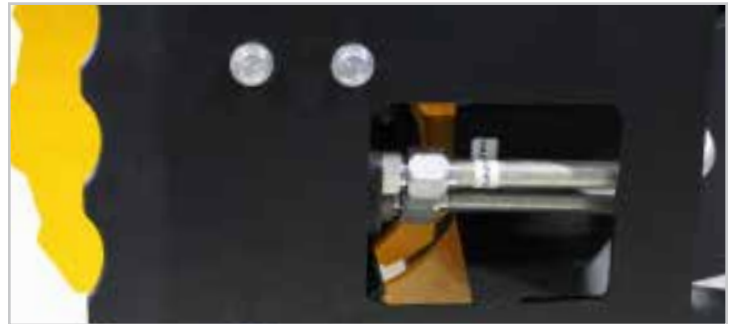
Snow removal equipment is one of our sweet spots. After all, snow removal is why the company was founded over 70 years ago. There simply is no company in the snowblower industry with more experience than Erskine Attachments®. Each one of our snowblowers are custom built for the specific power unit they are being used on, ensuring the best performance possible. A quality built snow blower that really works! Throw snow up to 45' while clearing paths down to the ground. We pride ourselves on having the best performing products in the marketplace.

Whether in the mountains, commercial or municipal snow removal, this snowblower is built to handle long hours and tough conditions, and will keep you moving!



Robotically Welded Chute Design

In order to accommodate the high volume of snow created by the combination of our unique motor and fan design we had to invent a robust, high capacity chute. We designed our chute to have specific arc and a large, short throat to accommodate a continuous high volume stream of snow.



Easy access to motor.

Auger motor connections are easily accessed to increase serviceability.

FEATURES

- Hydraulic control valves with electric solenoids provide you the ability to operate from the comfort of your cab to easily use attachment control functions, hydraulically adjusting the chute and deflector
- Hydraulic pressure relief valve allows our snowblower to have no shear pins and prevents unnecessary auger damage.
- The fan is mounted to a hydraulic motor, eliminating the need for a gear box.
- No Chains, sprockets or PTO shafts, this is old technology. Direct-drive hydraulic auger eliminates problematic chain drive.
- No freeze-up chute design seals out snow and freezing slush
- High-Carbon steel, reversible and replaceable bolt-on cutting edge.
- Easily adjustable depth skid shoes
- Our universal attachment plates fit most skid steers

800.437.6912

ERSKINE
ATTACHMENTS LLC