

ASSEMBLY INSTRUCTIONS

POWER BEYOND KIT

PBK65-SA for SA Series Tractors

NOTE

● These materials are prepared for use by trained technicians who are experienced in the service and repair of equipment of the kind described in this publication, and are not intended for use by untrained or inexperienced individuals. Such individuals should seek the assistance of an authorized service technician or dealer.



CAUTION

Avoid injury:

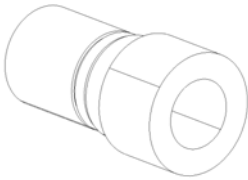
- Perform the work on a solid, flat ground.
- During the work, always wear protective boots, hardhat, and safe tight-fitting clothing. Two persons must take part in the work.
- For the bolts, joints and plugs whose recommended tightening torque is specified, be sure to tighten at that torque.

1. Kit Contents

Item NO.	Parts No.	Description (Illustrated Parts List Term)	Q'ty	Remarks (General Term)
1	1A8160-46250	COUPLER, QUICK 3/8F	1	Quick Coupler Female
2	198240-46260	RING, SNAP	2	Snap Ring
3	1A8330-47110	HOSE, OUT	1	Hydraulic Hose for Out
4	1A8330-47150	HOSE, IN	1	Hydraulic Hose for In
5	1A7882-47210	JOINT ASSY	2	Joint Assembly
6	1A8330-48500	STAY ASSY, BH	1	BH Stay Assembly
7	1A8160-48820	COUPLER, QUICK 3/8M	1	Quick Coupler Male
8	1A8300-51210	BAND, REPEAT	2	Repeat Band
9	26106-080202	BOLT, M8X 20 PLATED	1	Bolt
10	1A8330-47120	JOINT, 90 ELBOW	1	90 degree elbow joint
11	0F041-EN0010	ASSEMBLY BRIEF	1	Assembly Instruction Manual

*Parts numbers are based on the latest information available at the time this manual was published. YANMAR reserves the right to make changes at any time without prior notice.

(1)



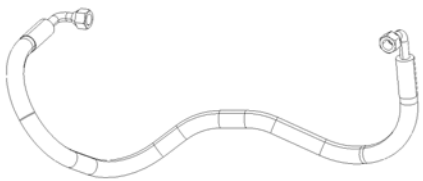
(2)



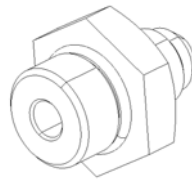
(3)



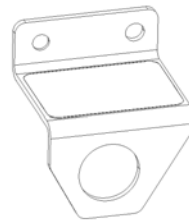
(4)



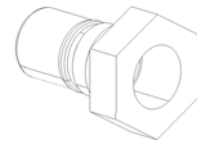
(5)



(6)



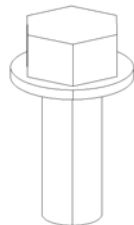
(7)



(8)



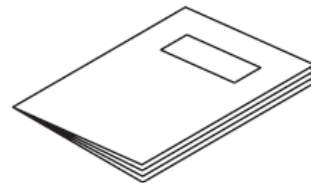
(9)



(10)



(11)

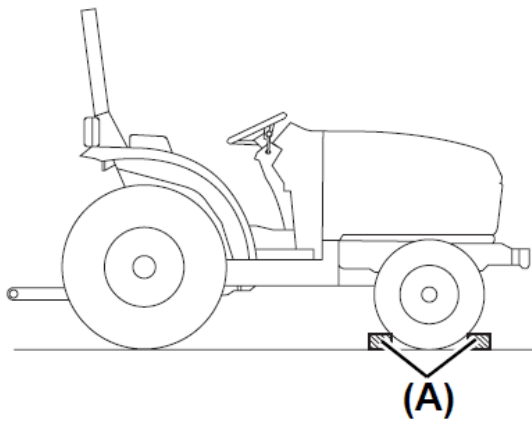


3. Preparation for Assembly

NOTE

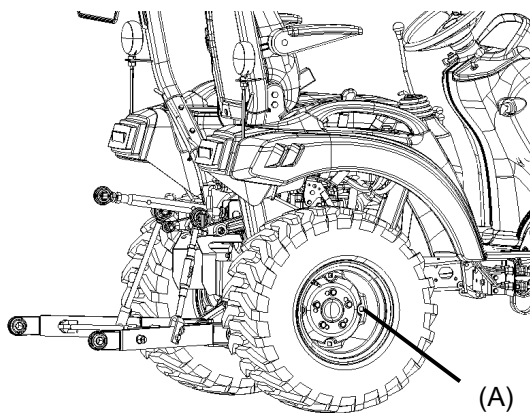
Before installing the B65-SA backhoe, it is necessary to install backhoe mount kit, swivel seat kit and power beyond kit.

1. Engage the parking brake securely.
2. Park the tractor safely and securely, and place chocks (A) around the front wheels (6 pieces / in total, except right rear wheel)



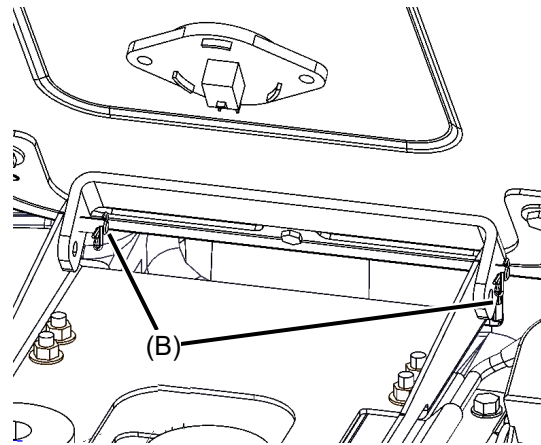
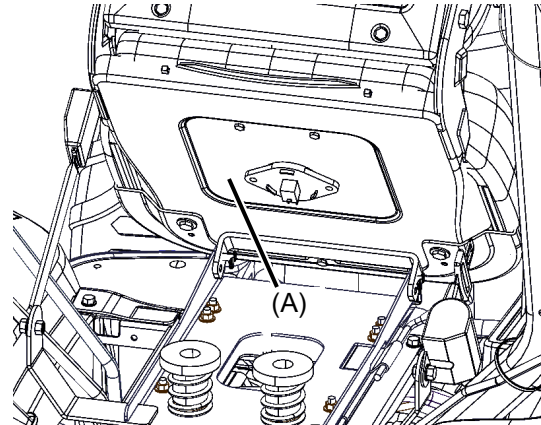
(A) Chocks

3. Remove the right rear wheel.



(A) Rear Wheel Bolts
(SA221/223—5 pieces)
(SA324/325/424/425—6 pieces)

4. Remove the operator seat.



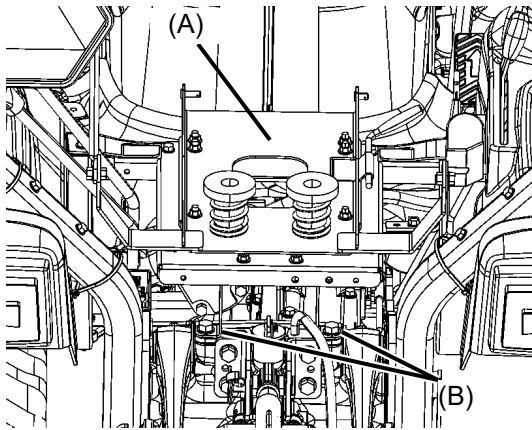
- (A) Operator Seat1 piece
(B) Snap pin2 pieces

NOTE:

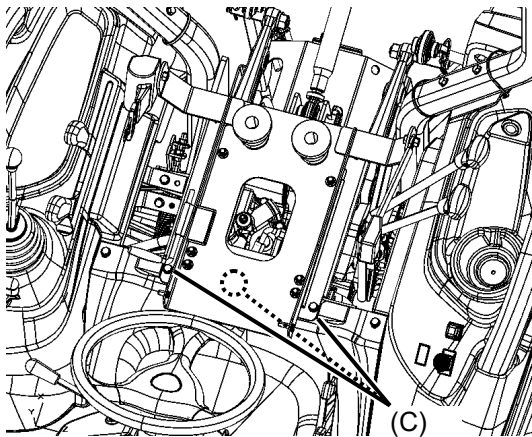
Disconnect the coupler of seat switch wire at this time.

5. Remove the seat stay assembly.

<Rear Side>



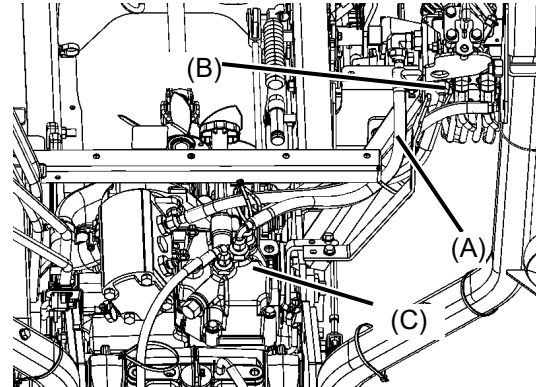
<Front Side>



- (A) Seat Stay Assembly1 piece
- (B) Bolt M12 X 25 Plated2 pieces
- (C) Bolt M8 X 20 Plated3 pieces

4. Installation of Power Beyond Kit

1. Remove the fitting of the hydraulic hose (A) from the lift valve assembly.

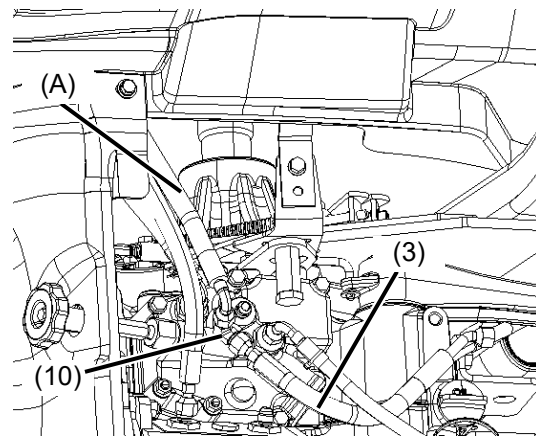


- (A) Hydraulic Hose
- (B) SCV Valve
- (C) Lift Valve Assembly

NOTES:

- Hydraulic hose (A) is connected onto the middle port of the lift valve assembly.
- Above drawing does not show the left fender for the better visibility in this manual.

2. Install the elbow joint (10) to connect the hydraulic hose (17) to the hydraulic hose (A), which was disconnected in step 1.

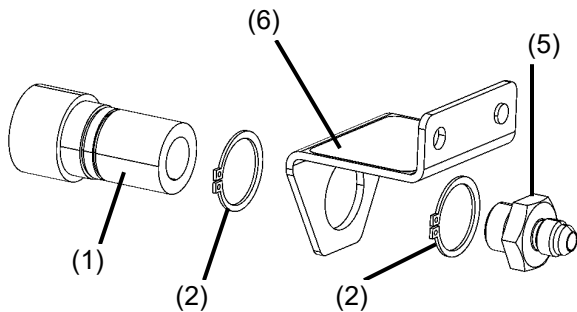


(A) Hydraulic Hose

Item NO.	Part to be installed	Q'ty
3	HOSE, OUT	1
10	JOINT, 90 ELBOW	1

Item	Part to be installed	Tightening Torque
3	HOSE, OUT	17 - 20 (23 - 27)
7	COUPLER, QUICK 3/8M	17 - 20 (23 - 27)

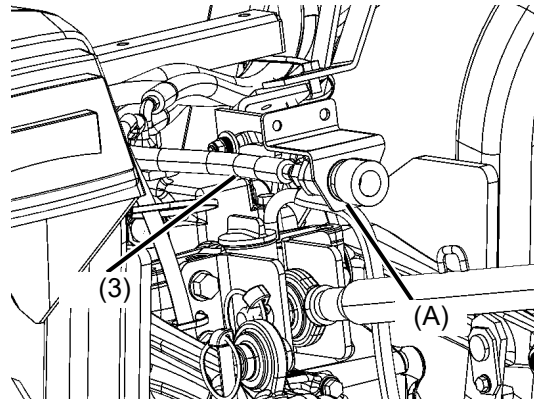
3. Assemble the BH stay assembly (6) and 2 snap rings (2) and the joint assembly (5) onto the hydraulic quick coupler female side (1).



Item NO.	Part to be installed	Q'ty
1	COUPLER, QUICK 3/8F	1
2	RING, SNAP	2
5	JOINT ASSY	1
6	STAY ASSY, BH	1

Item NO.	Part to be installed	Tightening Torque (ft*lbs (N*m))
5	JOINT ASSY	56 - 65 (78 - 88)

4. Install the quick coupler female assembly onto the hydraulic hose for out (3).

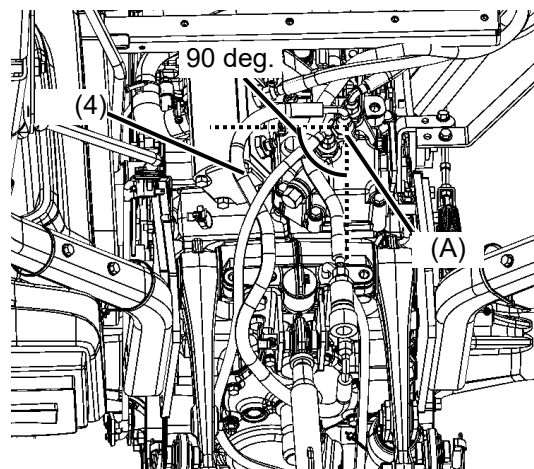


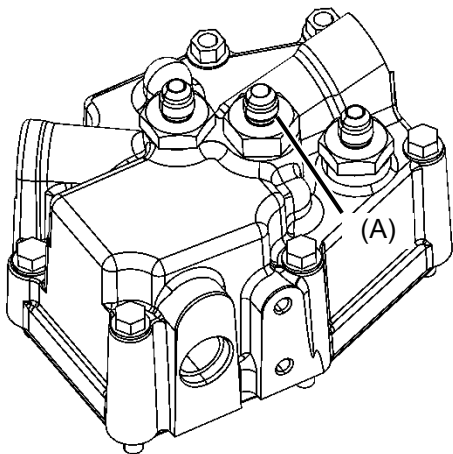
(A) Quick Coupler Female Assembly

Item NO.	Part to be installed	Q'ty
3	HOSE, OUT	1

Item NO.	Part to be installed	Tightening Torque (ft*lbs (N*m))
3	Hydraulic Hose for Out	17 - 20 (23 - 27)

5. Install the hydraulic hose for in (4) onto the middle port on the lift valve assembly.



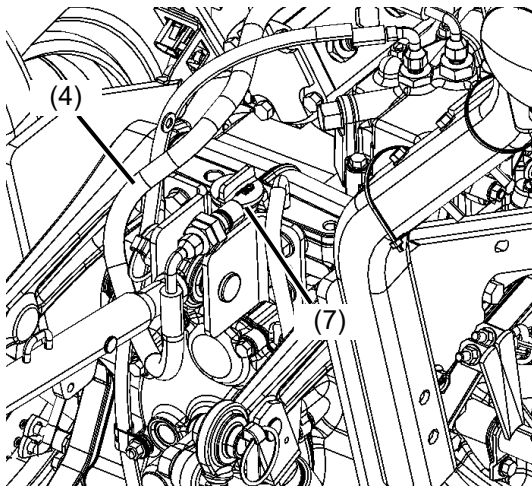


(A) Connecting Port of Lift Valve Assembly

Item NO.	Part to be installed	Q'ty
4	HOSE, IN	1

Item NO.	Part to be installed	Tightening Torque (ft*lbs (N*m))
4	HOSE, IN	17 - 20 (23 - 27)

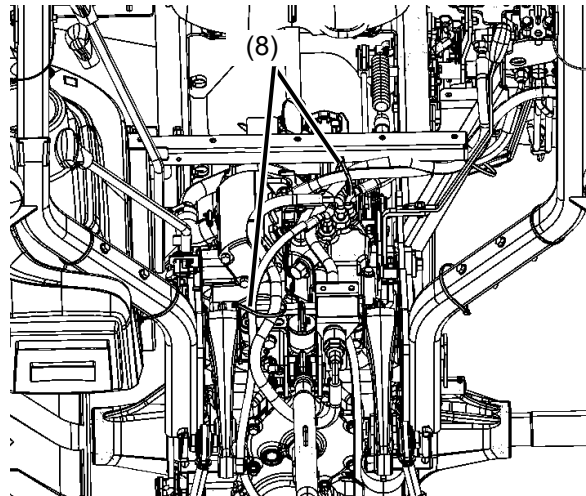
6. Install the quick coupler male assembly (7) onto the hydraulic hose for in (4).



Item NO.	Part to be installed	Q'ty
4	HOSE, IN	1
7	COUPLER, QUICK 3/8M	1

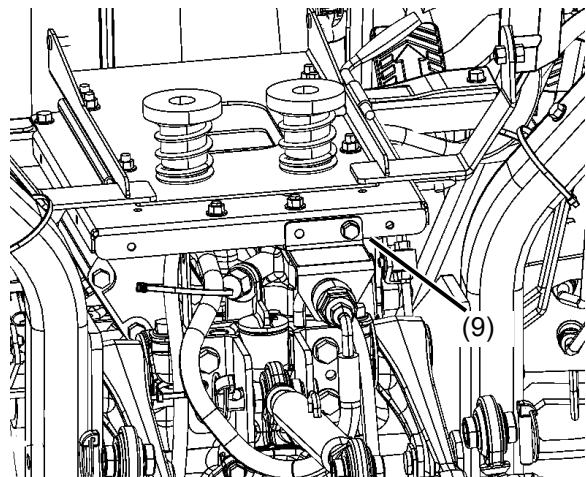
Item NO.	Part to be installed	Tightening Torque (ft*lbs (N*m))
4	HOSE, IN	17 - 20 (23 - 27)

7. Use the repeat band (8) to clamp the hydraulic hoses.



Item NO.	Part to be installed	Q'ty
8	BAND, REPEAT	2

8. Install the seat stay assembly onto the unit and tighten the bolt (9) onto the seat stay assembly.



Item NO.	Part to be installed	Q'ty
9	BOLT, M8X 20 PLATED	1

Item NO.	Part to be installed	Tightening Torque (ft*lbs (N*m))
9	BOLT, 8 X 20	17 - 22 (23 - 29)

9. Install the right fender, knobs, boot, parking brake rod, dust cover, step, drive pedal assembly and operator seat by reverse direction.

Part to be installed	Tightening Torque (ft*lbs (N*m))
BOLT M6	6 - 9 (8 - 12)
BOLT M8	17 - 22 (23 - 29)
BOLT M10	33 - 43 (44 - 59)
BOLT M12	58 - 72 (78 - 98)

Torque rear wheel bolts to 108–127 ft*lbs (79.7–93.7N*m)

**© 2021 YANMAR AMERICA CORPORATION YANMAR
licenses the usage rights of this document in
North America to YANMAR America Corporation.**

Yanmar America Corporation
101 International Pkwy
Adairsville, GA 30103

Version 5.0

Code No.: 0F041-EN0010
ENGLISH
PRINTED IN U.S.A.